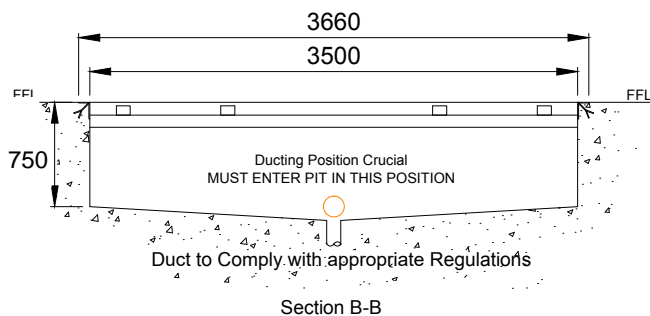
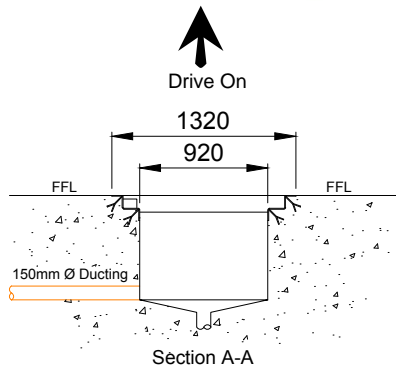
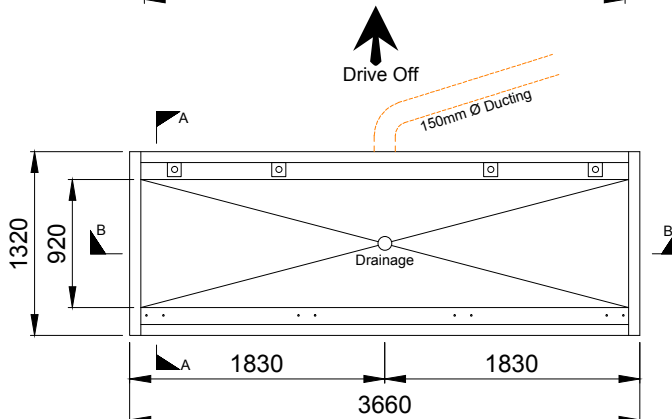
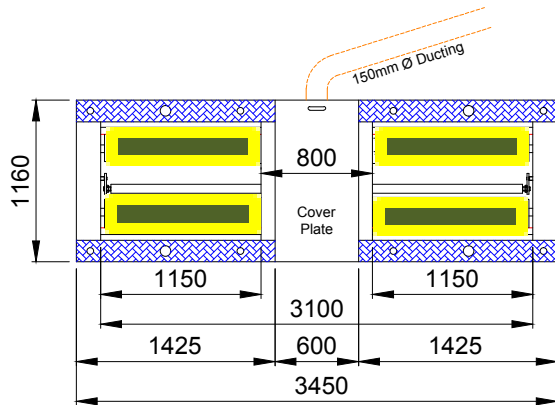


BRAKE 7000 COMMERCIAL ROLLER BRAKE TESTER INSTALLATION FRAME INSTRUCTIONS

7000 Roller Brake Tester actual size



CIVIL NOTES

- 1 IT IS THE CLIENTS RESPONSIBILITY TO ENSURE INSTALLATION CONFORMS WITH HEALTH & SAFETY AND ELECTRICAL REGULATIONS
- 2 BRAKE TESTER PIT TO BE LEVEL & 750 mm DEEP
- 3 CONNECTING DUCTS TO HAVE MINIMUM BEND RADIUS OF 150mm
- 4 BRAKE TESTER FRAME TO BE CONCRETED INTO POSITION BY CONTRACTOR
- 5 BRAKE TESTER ELECTRICAL SUPPLY:
2 x 11Kw MOTORS
415V 3 PHASE, EARTH & NEUTRAL
- 6 MINIMUM CONCRETE THICKNESS BENEATH ROLLER BRAKE TESTER PIT = 200mm
- 7 DRAW WIRES IN CONNECTING DUCTING FROM ROLLER BRAKE TESTER PIT TO CONTROL BOX MUST BE LEFT IN POSITION

CIVIL INSTRUCTIONS

- 1 DIG OUT PLANNED BRAKE TESTER SITE ENSURING ALL DIMENSIONS MEET WITH DVSA REGULATIONS WHERE REQUIRED
- 2 SITUATE INSTALLATION FRAME ENSURING
 - a PERPENDICULAR TO DRIVE ON DIRECTION
 - b POSITIONED CORRECTLY
 IF IN DOUBT ABOUT FRAME POSITIONING PLEASE ASK
- 4 IS LEVEL WITH FINISHED FLOOR LEVEL
- 5 WILL MEET WITH DVSA REGULATIONS WHERE REQUIRED
- 6 CREATE SHUTTERING FOR INSIDE OF FRAME & COMPLETE CONCRETE
- 7 TAKE AWAY SHUTTERING



BRADMAC GARAGE EQUIPMENT & SERVICES LIMITED
Spalding House, 90/92 Queen Street, Broughty Ferry
Dundee DD5 1AJ. Tel. No. 01382 698050/07734 206351

Please Note:

It is the Clients/Architects responsibility to ensure all details are correct and all dimensions are checked on site before commencement of any work. To be used in conjunction with site specific drawing and where relevant all dimensions are to finish at floor level.

