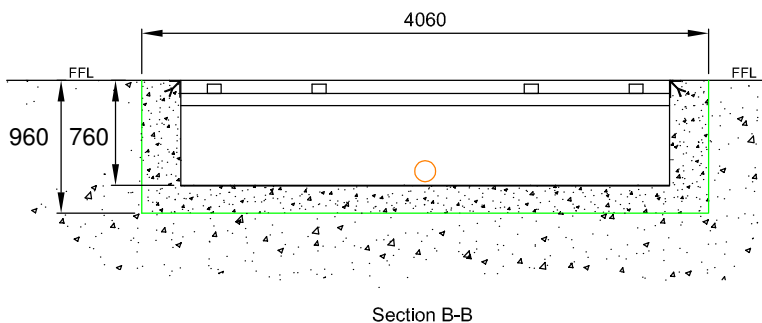
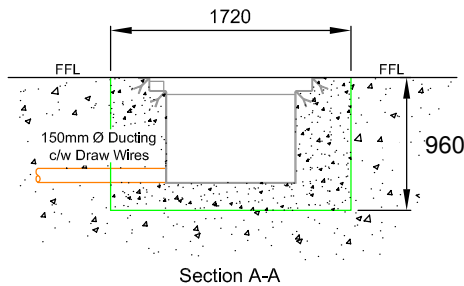
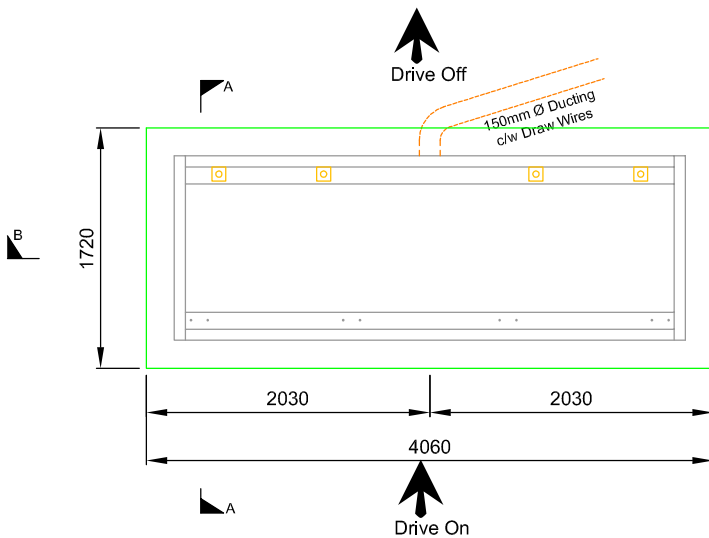
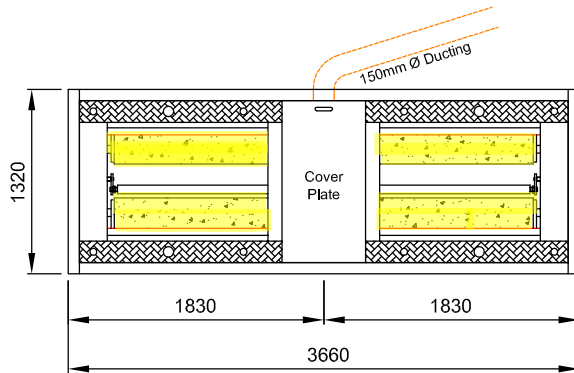


BRAKE 7000 COMMERCIAL ROLLER BRAKE TESTER SKIRTED FRAME INSTALLTION INSTRUCTIONS

**ACTUAL ROLLER BRAKE TESTER SIZE
INCLUDING SKIRTED FRAME**



CIVIL NOTES

- 1 IT IS THE CLIENTS RESPONSIBILITY TO ENSURE INSTALLATION CONFORMS WITH HEALTH & SAFETY AND ELECTRICAL REGULATIONS
- 2 SKIRTED FRAME TO BE LEVEL & 760 mm DEEP
- 3 CONNECTING DUCTS TO HAVE MINIMUM BEND RADIUS OF 150mm
- 4 SKIRTED FRAME TO BE CONCRETED INTO POSITION BY CONTRACTOR
- 5 BRAKE TESTER ELECTRICAL SUPPLY:
2 x 11Kw MOTORS
415V 3 PHASE, EARTH & NEUTRAL
- 6 MINIMUM CONCRETE THICKNESS BENEATH SKIRTED FRAME = 200mm
- 7 DRAW WIRES IN CONNECTING DUCTING FROM SKIRTED FRAME TO CONTROL BOX MUST BE LEFT IN POSITION

CIVIL INSTRUCTIONS

- 1 DIG OUT PLANNED BRAKE TESTER SITE ENSURING ALL DIMENSIONS MEET WITH DVSA REGULATIONS WHERE REQUIRED
 - 2 SITUATE SKIRTED FRAME ENSURING:
a PERPENDICULAR TO DRIVE ON DIRECTION
b POSITIONED CORRECTLY
- IF IN DOUBT ABOUT FRAME POSITIONING PLEASE ASK
- 3 IS LEVEL WITH FINISHED FLOOR LEVEL
 - 4 WILL MEET WITH DVSA REGULATIONS WHERE REQUIRED
 - 5 WHILE THE SKIRTED FRAME IS VERY SUBSTANTIAL WE RECOMMEND THAT IT IS TEMPORARILY BRASSED DURING THE CONSTRUCTION PROCESS.



BRADMAC GARAGE EQUIPMENT & SERVICES LIMITED
Spalding House, 90/92 Queen Street, Broughty Ferry
Dundee DD5 1AJ. Tel. No. 01382 698050/07734 206351

Please Note:

It is the Clients/Architects responsibility to ensure all details are correct and all dimensions are checked onsite before commencement of any work. To be used in conjunction with site specific drawing and where relevant all dimensions are to finish at floor level.

